

Homes for the Homeless People don't Choose to be homeless

6500 people sleep rough on the streets of London every year. This is a 77% increase from 2010. Anyone can become homeless. It is an issue that harms individuals & damages communities. Homeless people can often experience feelings of isolation, which can also increase their chances of taking drugs or experiencing physical or mental health problems leading to suicide. On average, homeless people die at just 47 years old. They are 35 times more likely to commit suicide than the average person.

Two thirds of rough sleepers say they have been insulted by a member of the public, and one in 10 say they have been urinated on. Homeless people are 13 times more likely to be a victim of violent crime than the general public, and are 47 times more likely to be a victim of theft. To deter homeless individuals finding comfort in a shelter, anti-homeless metal spikes have been added to small recesses and alcoves.

The ongoing effects of the economic downturn mean the number of people sleeping rough has increased sharply in recent years, and projects often struggle to find the funding they need to do this vital work.

It's time we changed our attitudes towards homeless people, they have the right to be treated with the same respect as anyone else. After all....it could happen to any of us.

Roughly 750 people sleep rough in London on any one night, my proposal intends to address this issue. A parasitic sleeping pod that can be attached to the side of any building or structure, allowing a safe haven for the homeless during a nights rest. A shelter from not only the harsh and unpredictable weather conditions of Britain, but a shelter from the general public who feel the homeless should be frowned upon and mistreated.



Homes for the Homeless People don't Choose to be homeless

The internal Space

When you take into account the labour saved by using large, strong, straight sheets of wood in building products, plywood is an economical solution to many problems.

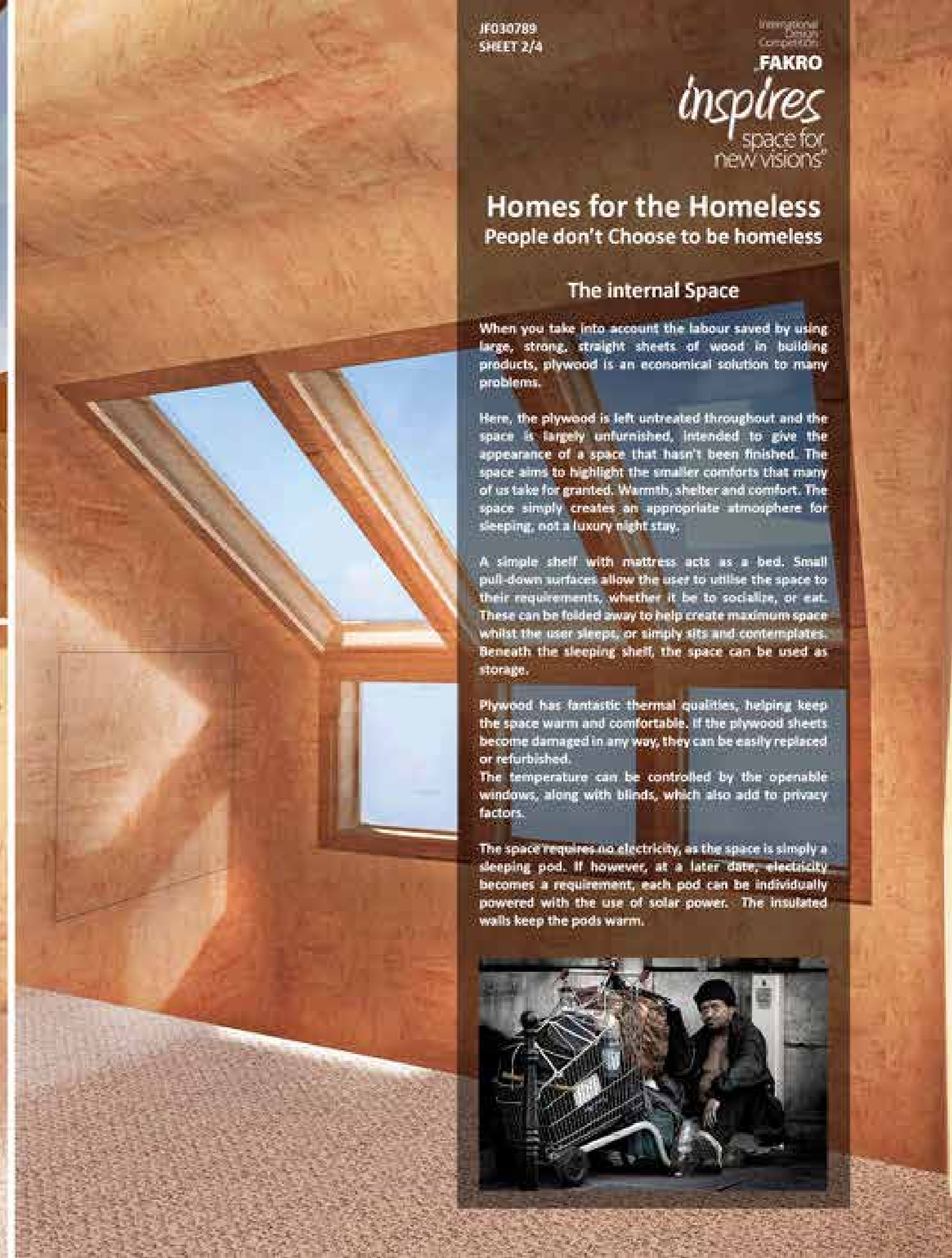
Here, the plywood is left untreated throughout and the space is largely unfurnished, intended to give the appearance of a space that hasn't been finished. The space aims to highlight the smaller comforts that many of us take for granted. Warmth, shelter and comfort. The space simply creates an appropriate atmosphere for sleeping, not a luxury night stay.

A simple shelf with mattress acts as a bed. Small pull-down surfaces allow the user to utilise the space to their requirements, whether it be to socialize, or eat. These can be folded away to help create maximum space whilst the user sleeps, or simply sits and contemplates. Beneath the sleeping shelf, the space can be used as storage.

Plywood has fantastic thermal qualities, helping keep the space warm and comfortable. If the plywood sheets become damaged in any way, they can be easily replaced or refurbished.

The temperature can be controlled by the openable windows, along with blinds, which also add to privacy factors.

The space requires no electricity, as the space is simply a sleeping pod. If however, at a later date, electricity becomes a requirement, each pod can be individually powered with the use of solar power. The insulated walls keep the pods warm.



KEY

1. Steel Frame
2. Insulated wall panel
3. Sleeping Shelf
4. Insulated Floor Panel
5. Fakro Scissor Loft Ladder Hatch
6. Fakro Scissor Loft Ladder Steps
7. Zinc Clad
8. Fakro Dual Function L-Shaped Window
9. Steel Frame
10. Insulated Wall Panel
11. Fakro Non Domed Flat Roof Window (Manually opened)

IF030789
SHEET 3/4

Immagine
Green
Construction

FAKRO

inspires
space for
new visions™

Homes for the Homeless People don't Choose to be homeless

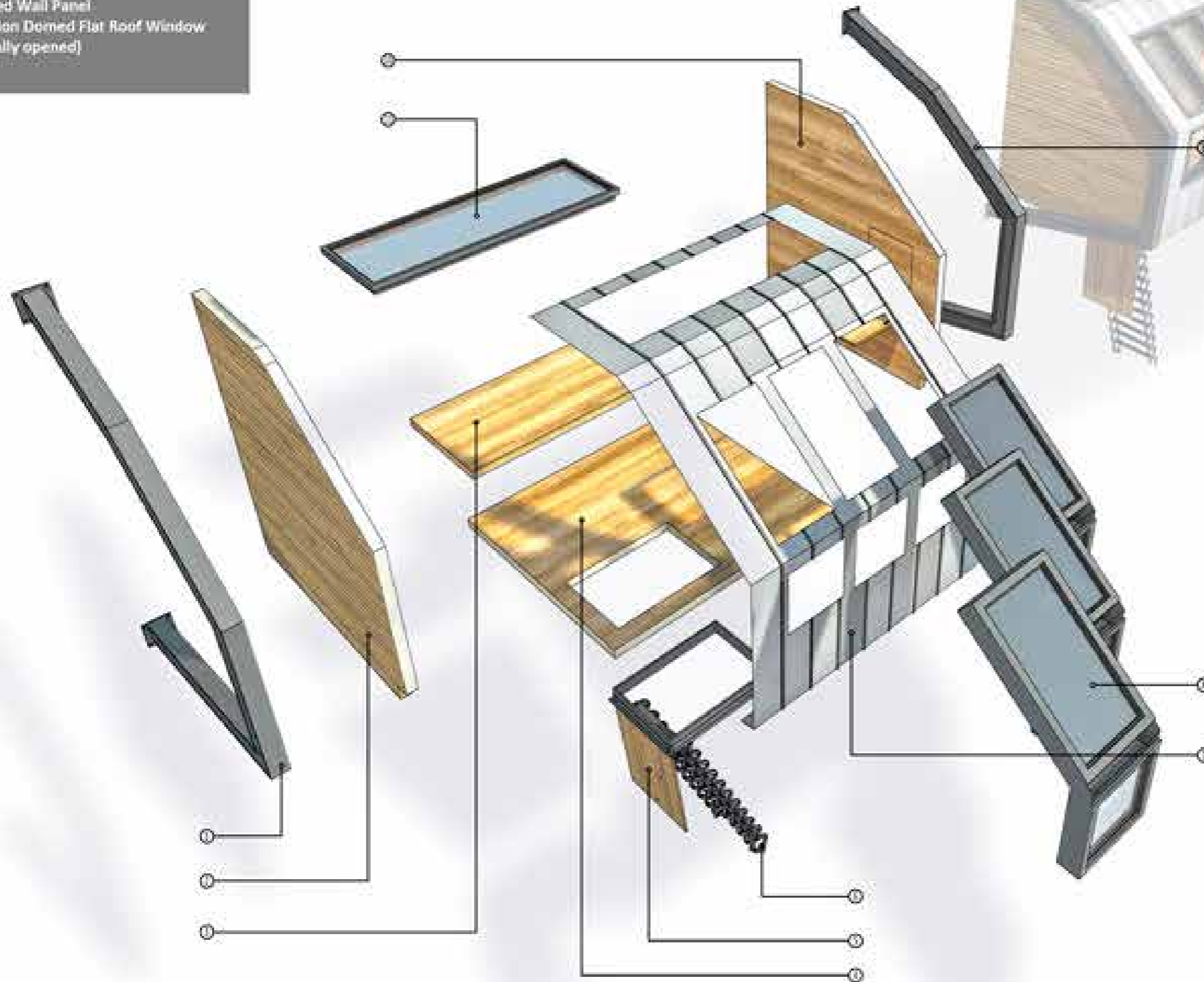
Construction Principles

The scheme has been designed to allow simple, speedy construction, with the ability to change the external materials (7, 2 & 10) to suit the surrounding environment. This will help when trying to introduce the sleeping pods onto specific buildings and areas. The zinc clad could perhaps be a different colour zinc, different pattern, or a different material all together.

The structurally insulated walls and floors keep the pods at a comfortable temperature, whilst the introduction of the FAKRO windows, will help the user control the inside temperature. (8 & 11)

I proposed the use of several FAKRO components, The Loft Scissor ladders will allow access to the pods (5 & 6). Several FAKRO L-Shaped windows (8) will flood the internal space with natural light, whilst providing the user with un-interrupted views of the surrounding environment, rural or urban, depending on the pod location. These are operable manually, to control the heat of the internal space. Several FAKRO accessories will be used alongside the windows, for example, window blinds to aid with any privacy concerns of the pods. The large, non-domed, flat roof windows (11) will provide a view up to the night stars from the sleeping shelf. This will also act as a fire escape route.

The Steel Frame elements (1 & 9) will bolt to the surface of the existing host building. With only four connection areas, minimal damage will occur, leaving the opportunity to remove and relocate the pods as a possibility. The pods can be grouped together as a community, or installed individually.



inspires
space for
new visions

Homes for the Homeless

People don't Choose to be homeless

Pod Arrangement Variations

